

Solutions for priming and coating
in offset and digital Printing

Improve quality and performance of priming and coating in offset and digital printing...

In packaging printing, there is a growing need for added-value and embellishment features, and for the offset and digital Printing, coating and priming industry, the TRESU coating and priming concept is an obvious choice. It's an in-line, pressure-controlled coating/priming concept for high-speed, sheet-fed and web offset and digital printing presses, suitable for both UV- and water-based coatings.

The offset and digital coating system from TRESU is suitable for a wide range of sheet-fed and web offset and digital applications where a perfect coating finish is needed, such as high-value glue-applied paper labels, carton board packaging and in commercial print as well as some web-fed offset and digital applications like shrink-wrap sleeves.

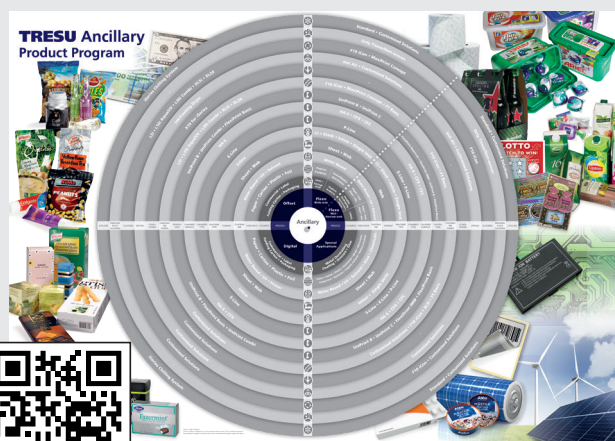
A complete solution

The unique concept is based on TRESU Ancillary's flexo technology, and the self-regulating concept comprises the Chamber Doctor Blade E-line, the Coating and Priming Circulator, and a Coating Conditioner.

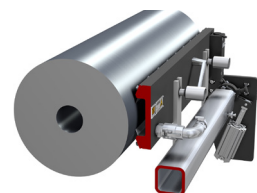
The circulator automatically adjusts to the coating supply and initiates optional cleaning programs, and by means of a sensor to measure coating pressure and press speeds at the doctor blade. The circulator also regulates the coating flow.

And finally, temperature regulation for UV coatings is achieved with the Coating Conditioners, which feature an automatic re-filling system to maintain coating quantity and fixed temperatures.

Overall, the system enables sheet-fed, web offset and digital printers to coat printed products at faster speeds, without the risk of micro-foaming and blisters in the coated surface.



Scan the QR code and learn more about the TRESU Ancillary Product Program



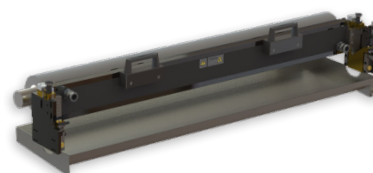
TRESU UniPrint - Chamber doctor blade system

- Universal chamber construction, customized for any application
- Patented TRESU seals guaranteeing authentic quality
- Open or closed ink circulation system
- Pressure Control technology for foam elimination
- For water-,UV- and solvent based inks and coatings
- Doctor blade quick change systems, E-line
- For special applications S-Line chamber in stainless steel
- Anodized, Teflon and Ceraflex corrosion surface protection



TRESU UniPrint Combi - Chamber doctor blade system

- Pressure control technology for foam elimination of sensitive coatings
- Pneumatic and air lock, mechanical locking system.
- Anilox width: up to 1200mm. - Anilox Ø: 80 - 250mm.
- Patented TRESU E-Line clamping system for fast doctor blade change and high quality doctoring
- Streamlined and compact design for perfect handling
- Open or closed ink circulation system
- Pressure control technology for foam elimination
- For water-, UV- and solvent based inks and coatings
- Patented TRESU seals guaranteeing authentic quality



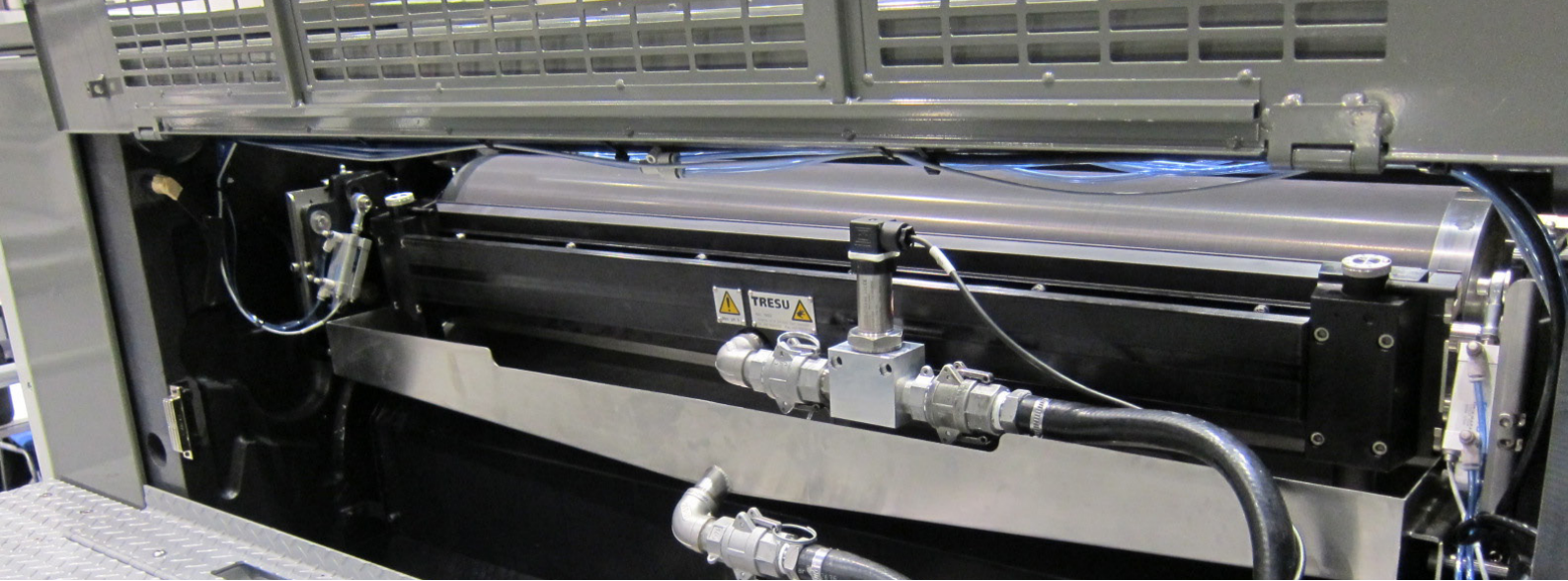
TRESU FlexiPrint Basic - Chamber doctor blade system

- Mechanical loading system
- Patented TRESU E-Line clamping system for fast doctor blade change and high quality doctoring
- Standardized, compact construction with excellent price/performance ratio
- Open or closed ink circulation system
- Pressure control technology for foam elimination
- For water-, UV- and solvent based ink and coatings
- Patented TRESU seals guaranteeing authentic quality



TRESU Anilox roller

- Customized roller specifications are necessary for achieving exceptional coating quality
- Based on many years of experience, we are able to define engraving specifications, needed to achieve optimum coating performance, using the latest anilox roller technology



TRESU Li-Series

Circulators for aqueous and UV-coating types



The TRESU Pressure Control Technology

A constant, pressure control is maintained in the chamber doctor blade. This causes a liquid barrier to form between the rotating anilox cells and the chamber, stopping any air in the cells from transferring to the coating during production.

TRESU L5i

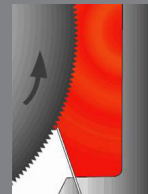
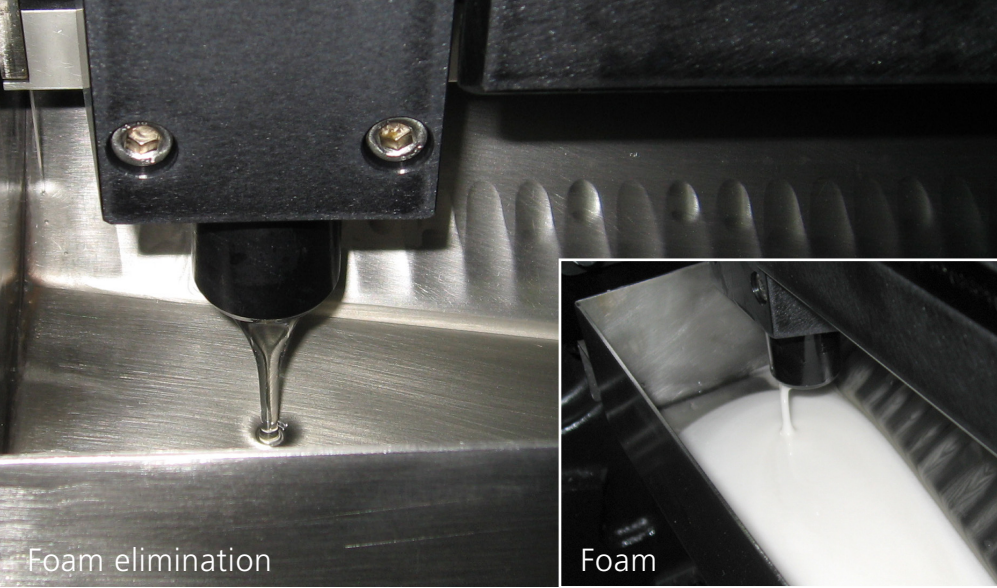
- Automation and process control
- Robust circulator for aqueous or UV-coatings
- Compact design
- Simple and safe - sensor controlled coating circulation with alarm system
- Operator and maintenance friendly
- Easy operation from remote colour screen touch panel

TRESU L10i Aqua and L10i UV

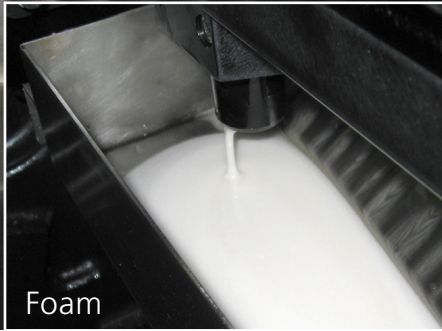
- L10i Aqua for aqueous coatings
- L10i UV for UV-coatings
- Coating supply regulator by level sensor
- Pressure control technology for foam elimination of sensitive coatings
- Automatic cleaning programs
- Automatic detergent dosing
- Compact design
- Easy operation from remote colour screen touch panel

TRESU L30i Combi

- A superior 2-in-1 solution for both aqueous and UV-coatings, in separated circuits
- Flow operations for standard coatings
- Pressure control technology for foam elimination of sensitive coatings
- Automatic cleaning programs
- Automatic detergent dosing
- Compact design
- Easy operation from remote colour screen touch panel



Foam elimination

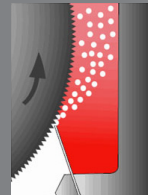


Foam

The TRESU Pressure Control Technology is a key feature

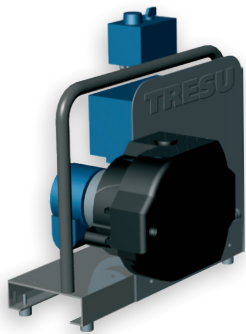
A constant high pressure in the chamber doctor blade causes a liquid barrier to form between the rotating anilox cell and chamber stopping any air in the cell from transferring to the coating during production.

The UniPrint Combi chamber doctor blade also features TRESU patented airtight seal system, elimination leakage and the patented E-Line, instant doctor blade changing system. The compact design of the chamber allows easy changeover minimizing coating agitation and optimizing productivity.



Foam

TRESU XL-Series - Circulators for all coatings



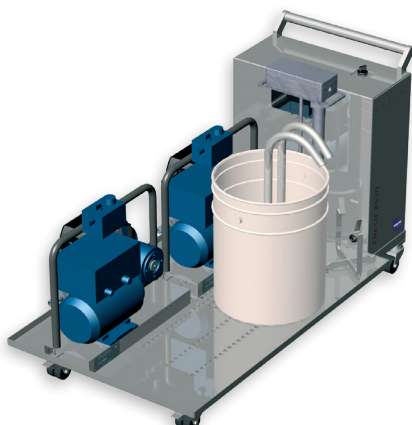
TRESU XL1

- Easy to install - plug and play
- Small, simple, and easy to clean and operate
- Use XL1 as a second pumping solution – for critical tests or as backup coating supply system
- In case of no constant pull in return line, two XL1 units are recommended



TRESU XL5i

- Compact system with 2 speed controlled peristaltic pumps
- Easy to install - plug and play
- Easy to operate
- Semi automatic cleaning with timer settings
- Flow operations for standard coatings.
- Pressure control technology for foam elimination of sensitive coatings
- Sensor controlled with alarm light and chamber closed.



TRESU XL20 XL20-RD XL20-RP

- Optional automatic refill systems from main coating container to heated coating drum
- XL20-RP - refill by peristaltic pump
- XL20-RD - refill by diaphragm pump
- Movable circulator and conditioner for all standard-, and sensitive coatings
- Integrated heating system for UV-coating
- Peristaltic pump for continuously adjustable and soft treated coating supply
- Simple and safe - sensor controlled coating circulation with pan sensor and alarm light
- Easy operation and maintenance

TRESU X-Series Coating conditioners



TRESU X10i and X15i

- Heating systems for UV-based coatings
- X10i is an automatic conditioner for preparation of UV-coatings
- X15 is a stand-alone solution and can be combined with other coating circulators
- X10i is connected to and controlled by the L10i UV or the L30i Combi and XL5i
- Controlled heating up to 50° C of constant coating quantity
- No contamination of the coating in the main container
- Easy operation from remote colour screen touch panel

TRESU XD Agitation

- Coating drum agitator for all standard-, and sensitive coatings
- Coating drum with plastic lid
- Speed controlled electrical agitator
- Perfect conditioning for aqueous and UV-coatings
- Avoids pigment sedimentation
- Reduces foam build-up
- Suitable for all printing and coating applications

TRESU XDW Agitation

- Coating drum agitator for all standard-, and sensitive coatings
- Speed controlled electrical agitator
- Can be used as a coating cooling system in combination with an external chiller

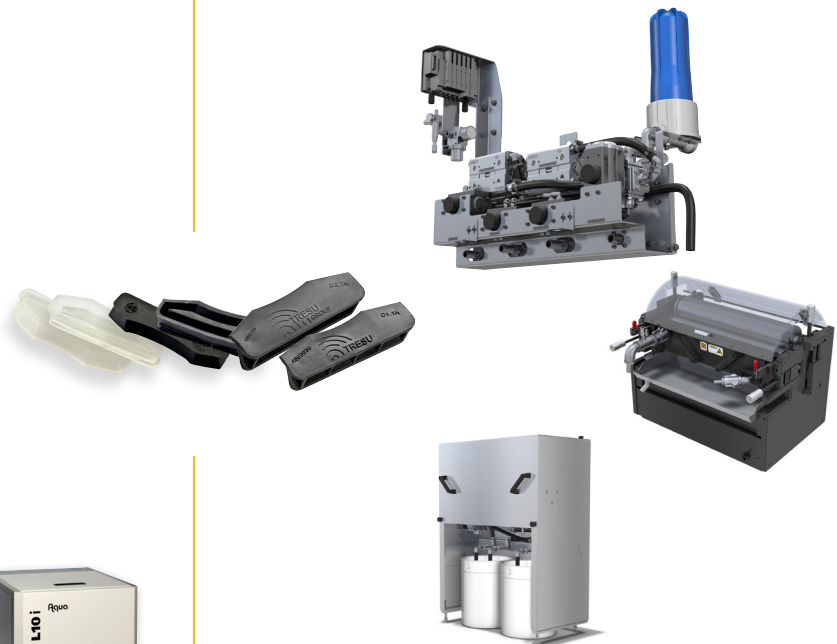
TRESU coating circulator and conditioner program for Offset

System			Li Series					XL Series				X Series						
			L30i Combi		L10i Aqua		L10i UV		L5i	XL5		XL1	XL20	X10	X15	XD	XDW	
Cleaning function			Fully automatic		Fully automatic		Fully automatic		Semi automatic	Semi automatic		Manual	Manual					
Pressure control			NO	YES	NO	YES	NO	YES	N/A	NO	YES	N/A	N/A					
AQ	Standard	Standard	●	●	●	●	○	○	●	●	●	●	○	●	●	●	●	
		High viscosity	●	●	●	●	○	○	●	●	●	●	●	○	●	●	●	●
		Foaming sensitive	●	●	●	●	○	○	●	●	●	●	●	○	●	●	●	●
	Special	Metallic / Pearl	○	○	○	○	○	○	○	●	●	●	●	○	●	●	●	●
		Opaque white	○	○	○	○	○	○	○	●	●	●	●	○	●	●	●	●
		Special coating	○	○	○	○	○	○	○	●	●	●	●	○	●	●	●	●
UV	Standard	Standard	●	●	○	○	●	●	●	●	●	●	●	●	●	●	●	●
		High viscosity	●	●	○	○	●	●	●	●	●	●	●	●	●	●	●	●
		Foaming sensitive	●	●	○	○	●	●	●	●	●	●	●	●	●	●	●	●
	Special	Metallic / Pearl	○	○	○	○	○	○	○	●	●	●	●	○	●	●	●	●
		Opaque white	○	○	○	○	○	○	○	●	●	●	●	○	●	●	●	●
		Special coating	○	○	○	○	○	○	○	●	●	●	●	○	●	●	●	●
NOTE! Ask the supplier, for coating specifications.			● Recommended				● Possible				● Restricted				○ Not possible			
Fully automatic:			Empty coating, cleaning and drain can be carried out from an operator panel.															
Semi automatic:			Empty coating and cleaning procedures are controlled by a timer. Switching lances from coating to detergent is carried out manually.															
Manual:			Cleaning and draining procedures are manual.															

TRESU offset coating



TRESU digital priming and coating



TRESU Original Parts Webshop



Order your original spare parts online in the TRESU Webshop and save money.

You can shop by press or by parts
- directly, conveniently, and secure...



www.tresu-webshop.com

TRESU Group is a highly specialized company offering flexible, customized solutions of flexo printing machines and high-performance ancillary products for flexo, digital and offset printing to the graphic industry.

TRESU Group has over 35 years of experience and expertise in the development and production of engineered solutions for this industry and supplies directly to end-customers, OEMs and partners.

TRESU
Venusvej 44
DK 6000 Kolding
Denmark
Tel: +45 76 32 35 00
Mail: tresu@tresu.com
www.tresu.com

TRESU GmbH
Giftener Str. 9A
31157 Sarstedt
Germany
Tel: +49 5066
9174286
Mail: aju@tresu.de

TRESU Italia s.r.l.
Via delle Groane 27/b
I-20024 Garbagnate
Milanese (MI)
Italy
Tel: +39 02 96 59 202
Mail: tresu@tresu.it

TRESU Japan Co., Ltd.
8-1-32, Nanko Naka
Suminoe-ku
Osaka, 559-0033 Japan
Tel: +81 6 4703 0601
Mail: sales@tresu.jp

TRESU China
Room 808, Environment
Building, No.16
Guangqumennei Street,
Dongcheng District,
100062 Beijing
China
Tel: +86 (0) 10 65911628
Mail: sales@tresu.cn

TRESU Americas
635 Westport Parkway,
Suite 300
Grapevine, TX 76051
USA
Tel: +1 214 631 2844
Mail: tresu-americas@tresu.com