



TRESU is a highly specialized company offering flexoprinting machines and ancillary products and concepts for flexo, digital and offset printing as well as customer service and technical support.

TRESU has more than 40 years of experience and expertise in the development, production and maintenance of engineered solutions and supplies directly to end-customers, OEMs and partners worldwide.

TRESU has production facilities in Denmark and sales companies in USA, Germany, Italy, Japan and China as well as an international agency network providing local support and know-how.

TRESU A/S

DK-6000 Kolding
DENMARK
+45 7632 3500

TRESU GmbH

D-31157 Sartstedt
GERMANY
+49 5066 9174286

TRESU Japan Co., Ltd.

559-0033 Osaka
JAPAN
+81 6 4703 060

TRESU Americas

Grapevine, TX 76051
USA
+1 214 631 2844

TRESU Italia s.r.l

I-20024 Garbagnate Milanese (MI)
ITALY
+39 0296 59 202

TRESU China

100062 Beijing
CHINA
+86 (0) 10 65911628

TRESU Americas Customer Care:

Tel: +1 866 873 7887

Mail: Spareparts-us@tresu.com

www.tresu-webshop.com/us

Venusvej 44 | DK-6000 Kolding | Denmark

Tel.: +45 76 32 35 00 | tresu@tresu.com

TRESU

Sign up on tresu.com and stay connected
www.tresu.com

TRESU

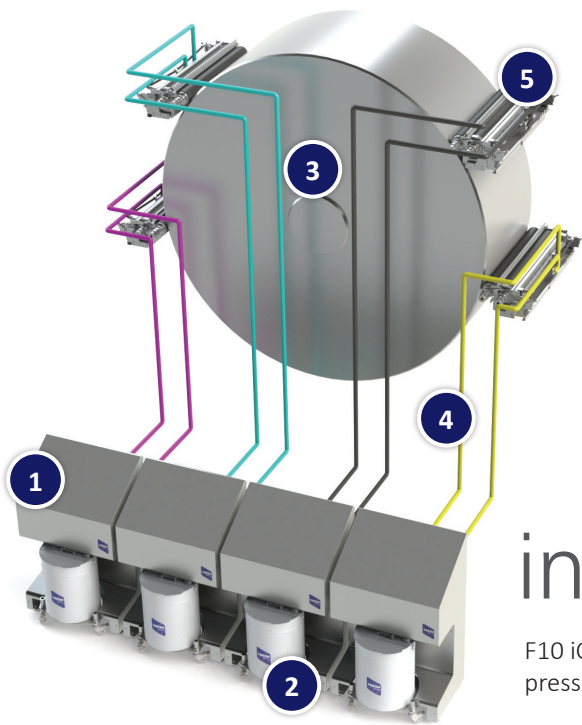
TRESU F10 iCon

Intelligent ink control system



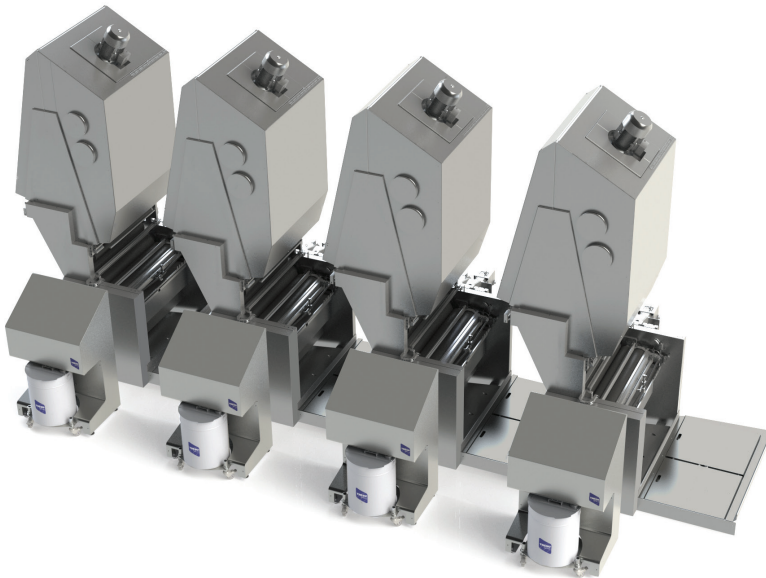
TRESU F10 iCon

Intelligent ink control system



inkLink®

F10 iCon works with most press configurations



30% Production Increase.

With inkLink the users will experience a production increase of up to 30%, uniform quality and reduced consumption of resources.

The solution takes parameters such as flow, pressure, pH, temperature and viscosity into consideration.

F10 iCon

Each ink circulator unit contains pumps for forward and return flow.

Trolley

Movable and adjustable trolleys for ink buckets.

Press configuration

CI-press or other press configurations.

Ink hoses

Ink hose/pipes for forward and return flow. For water- and solvent based inks.

Chamber doctor blade

Accommodates most brands.



User interface F10 iCon

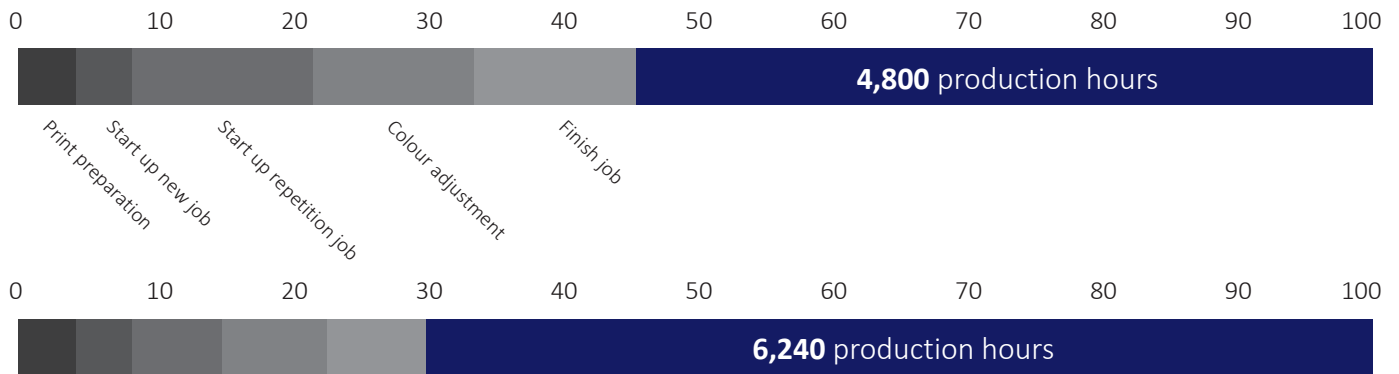
Clean the system in 5-10 minutes with complete ink change on all units

The F10 iCon enables fully automatic cleaning for water- and solvent-based inks with an easily adjustable menu.

The cleaning system removes ink, ensures the chamber is clear of residue and has low water/solvent consumption



Improvement of production time ROI in less than five months



TECHNICAL SPECIFICATIONS

Machine type	CI-, Stark, In-Line or other press configurations
Coating type	Water- or Solvent based ink and coating
Approval	Atex/EX

Dimension (HxWxD)

Operation unit	400*500*210mm
----------------	---------------

Weight

Pump unit (Dual Units)	130kg
Operation unit	60kg

External Connections

Voltage	100-230 VAC- 50-60 Hz
Max. current	10A
Cable connection	3g 1,5 mm ²
I/O Signal from external PLC	Yes
Air supply	Min 6 bar- max 10 bar, clean and dry (ISO)
Air consumption	max. 200L/min/unit
Pump hose connections	3/4"/1"

Cleaning with water based ink

Water supply	0,5-1 bar, 50-100 l/min
Cleaning program	Up to 15 minutes for a 8 color press
Water consumption	Approx. 20-25 liter per unit
Detergent	Approx 1 liter per unit

Cleaning with solvent based ink

Solvent supply	0,5-1 bar, 50-100 l/min
Cleaning program	Up to 10 minutes for a 8 color press
Solvent consumption	Approx. 14 liter per unit
Data logging	Optional
Filter solution	Yes
Alarm history	Yes
iCon-based HMI touch screen	Yes
Multi-option cleaning process	Yes

From pains to gains with F10 iCon

F10 iCon is part of the TRESU inkLink system that delivers uniform quality, less waste and reduced cost by effective process control from ink container to substrate.

- Automatic adjusting of parameters
- Automatic cleaning during job change
- No hoses to move
- Closed system
- Touch Screen
- No extra bucket
- Recipes
- Easy handling