

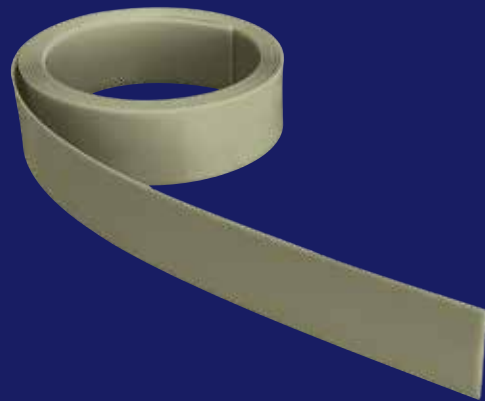
Extending Performance

TRESU TruPoint EDGE

TruPoint EDGE is a premium doctor blade, is stiff and resists mechanical creep, offers exceptional performance in high-speed, high temperature and aggressive chemical environments throughout the entire life of the blade.

TruPoint EDGE advantages:

- Temperatur resistant
- Chemical compatibility
- Consistent metering
- No UV ink spitting
- No anilox scoring
- Increased blade life
- Safe to handle



TECHNICAL SPECIFICATIONS

Doctoring quality:	●●●●●●●●○○
Corrosion resistance:	●●●●●●●●●●
Wear resistance:	●●●●●●●●●●
Anilox wear resistance:	●●●●●●●●●●
Material:	PET Blend
Thickness:	.030"/.8mm .040"/ 1mm
Profile:	Bevel: 30° or Microtip: M8, M10, M15, M25
Max width:	2"
Max length:	100"/ 30m Cut-To-Length available

TRESU webshop

We have put together a special selection of frequently purchased genuine spare parts and consumables in order to extend the performance of your TRESU equipment:

<https://www.tresu.com/webshop>

Direct, fast, secure, and convenient on-line portal for ordering genuine Spareparts & consumables:

- Save time and money
- Order around the clock – daily shipping
- Worldwide delivery
- Genuine spare parts & consumables



Fastest doctor blade change in the industry