



# *TRESU UniPrint*

## *Chamber doctor blade system*



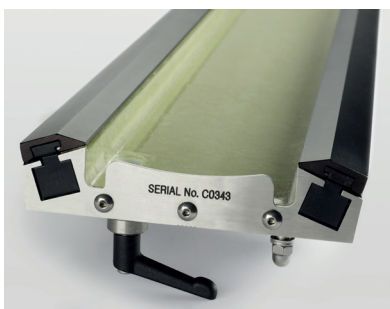
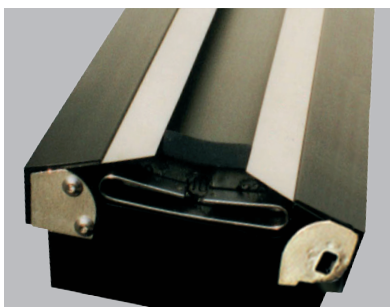
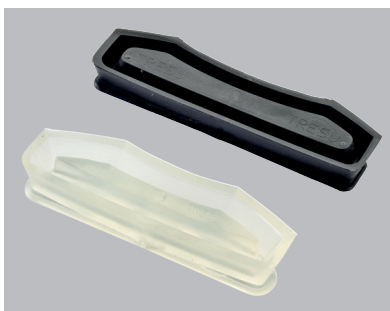


## TRESU UniPrint

### Chamber doctor blade systems

The TRESU UniPrint is a universal chamber construction, customized for any application and printing press

- Anilox width from 80 - 6000 mm
- Production speed up to 1000 m/min
- Different doctor blade clamping systems:
  - S-Line: Screw based, used e.g. for special coatings
  - E-Line: For chamber widths up to 2000 mm
  - P-Line: For aqueous inks and coatings only
- For special special applications such as:
  - Pressure controlled ink/coating circulation with manual or closed loop control system, multiple in- and outlets
- Different construction principles as UniPrint B or UniPrint C, depending on space condition and/or applications



Patented TRESU seals ensure perfect sealing

**E-Line**  
Excentric, quick clamping solution

**P-Line**  
Pneumatic, quick clamping solution

### Technical Specifications

Profile	D1 - D5
Anilox Ø	60-500 mm
Anilox width	Up to 6000 mm
Speed	Up to 1000 m/min
Print mode	Closed, open, pressure controlled
Clamping	E-line/P-line quick clamping solutions or S-Line
Construction	Standard or customized
Inks/coatings	Water-, UV- or solvent based inks and coatings, glues etc.



*The Best Part of Innovation*

**TRESU Group**

14-16, Eegsvej  
DK-6091 Bjert  
Tel: +45 76 32 35 00  
tresu@tresu.com  
[www.tresu.com](http://www.tresu.com)