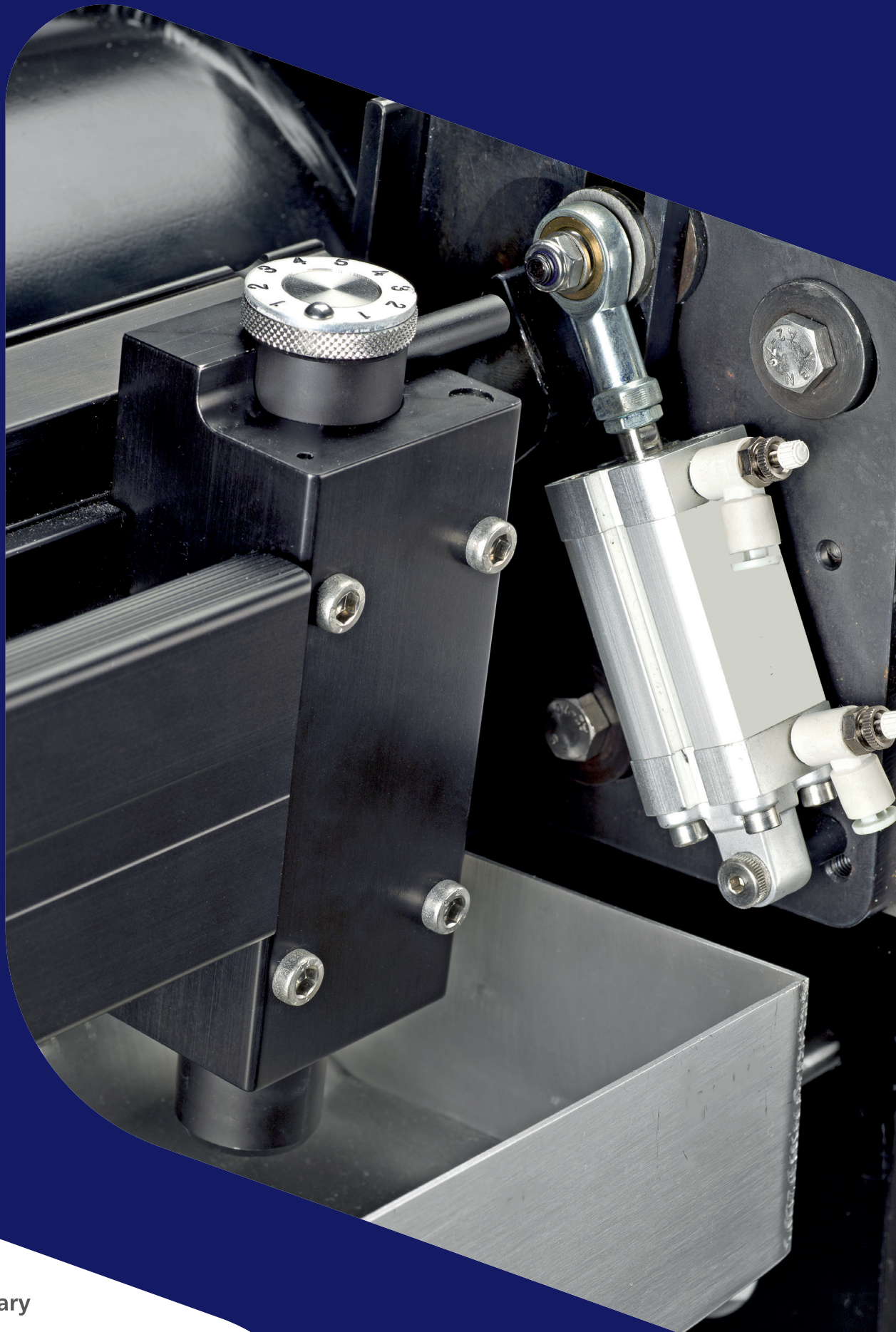




# *TRESU UniPrint Combi*

## *Chamber doctor blade system*



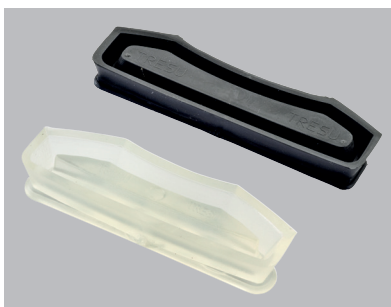
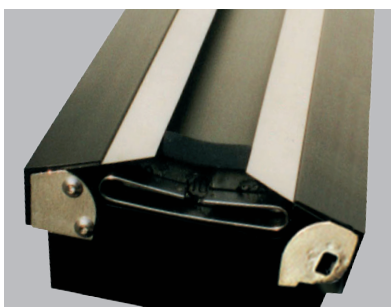


## TRESU UniPrint Combi

### Chamber doctor blade system

Chamber doctor blade system in a streamlined and compact design for perfect handling

- For water-, UV- and solvent based inks and coatings
- Uniform blade clamping for high quality doctoring
- Patented TRESU E-Line clamping system for fast doctor blade change
- Patented TRESU seals guaranteeing authentic quality
- TRESU Combi technology  
Flow operation for standard coatings  
New pressure control technology for foam elimination of sensitive coatings



Combi technology

E-Line  
Excentric, quick  
clamping solution

Patented TRESU  
seals ensure perfect  
sealing

### Technical Specifications

Profile	D1 - D5
Anilox Ø	80 - 400 mm
Anilox width	Up to 1200 mm
Speed	Up to 300 m/min
Clamping	E-Line quick change
Coating Mode	Flow and Pressure control



*The Best Part of Innovation*

**TRESU Group**

14-16, Eegsvej  
DK-6091 Bjert  
Tel: +45 76 32 35 00  
tresu@tresu.com  
[www.tresu.com](http://www.tresu.com)