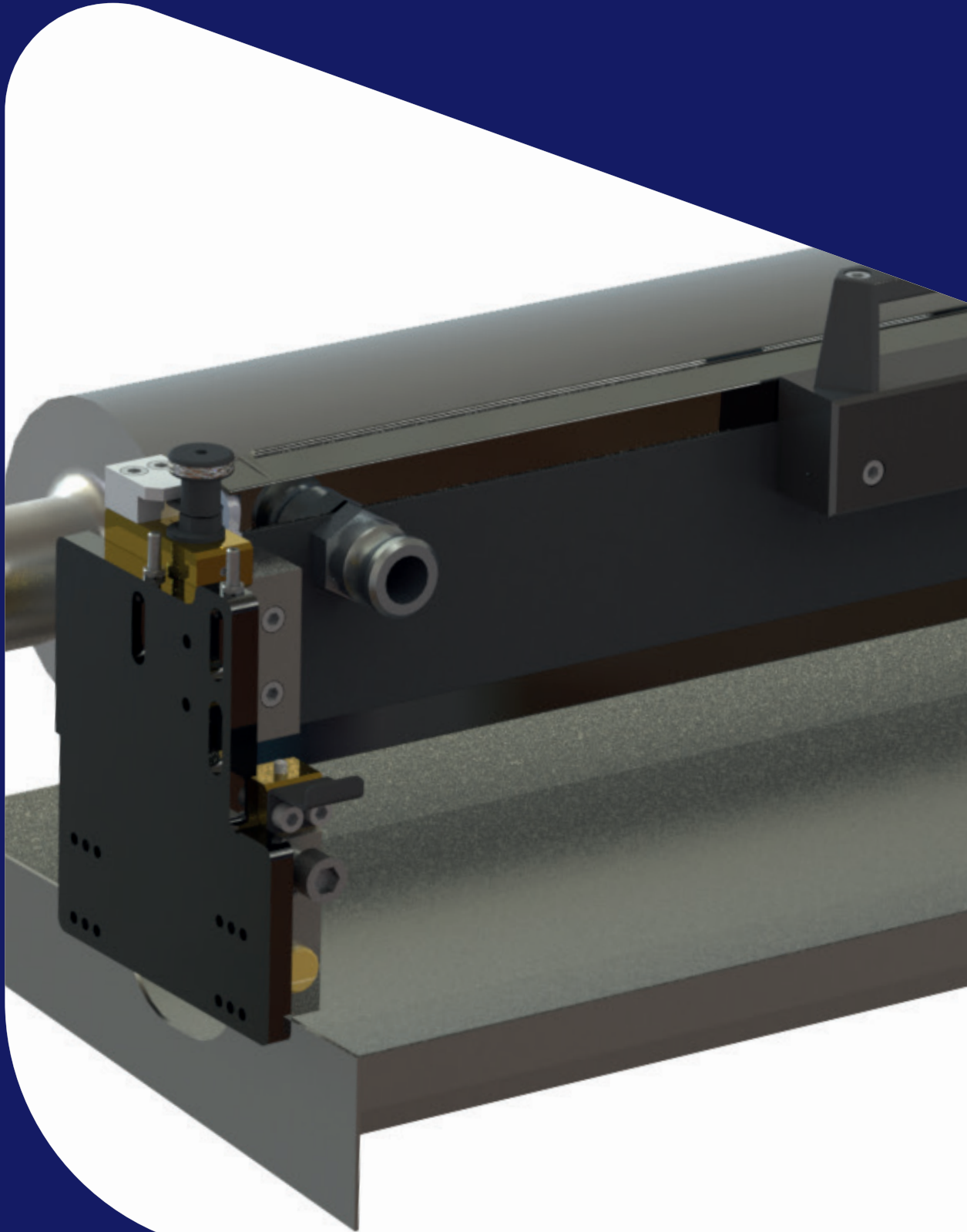
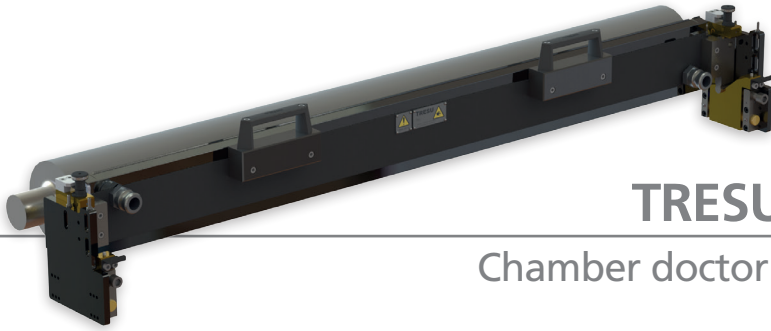




# *TRESU FlexiPrint*

## *Chamber doctor blade system*



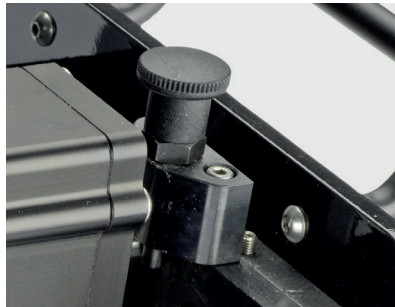


## TRESU FlexiPrint

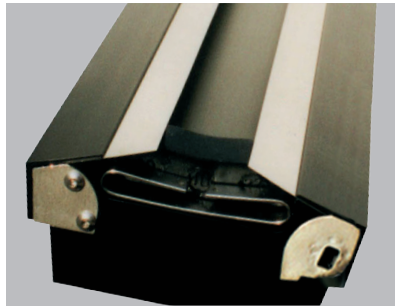
### Chamber doctor blade systems

The TRESU FlexiPrint delivers a standardized, compact construction with excellent price/performance ratio

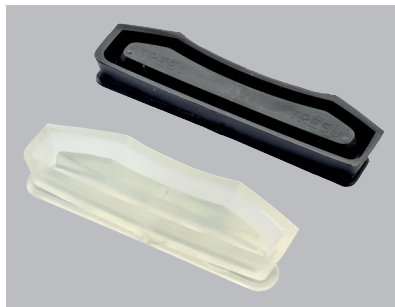
- Mechanical loading system
- Patented TRESU E-Line clamping system for fast doctor blade change
- Patented TRESU seals guaranteeing authentic quality
- High quality doctoring for perfect printing
- For water-, UV- and solvent based ink and coatings



Easy lock/unlock



E-Line  
Excentric,  
quick clamping  
solution



Patented TRESU  
seals ensure  
perfect sealing

### Technical Specifications

Profile	D1 – D5
Anilox Ø	60 - 400 mm
Anilox width	Up to 2000 mm
Speed	Up to 350 m/min
Clamping	E-Line quick change (option: S-Line)
Circulation	Siphone or knee outlet
Inks/coatings	Water-, UV- or solvent based



*The Best Part of Innovation*

### TRESU Group

14-16, Eegsvej  
DK-6091 Bjert  
Tel: +45 76 32 35 00  
tresu@tresu.com  
[www.tresu.com](http://www.tresu.com)