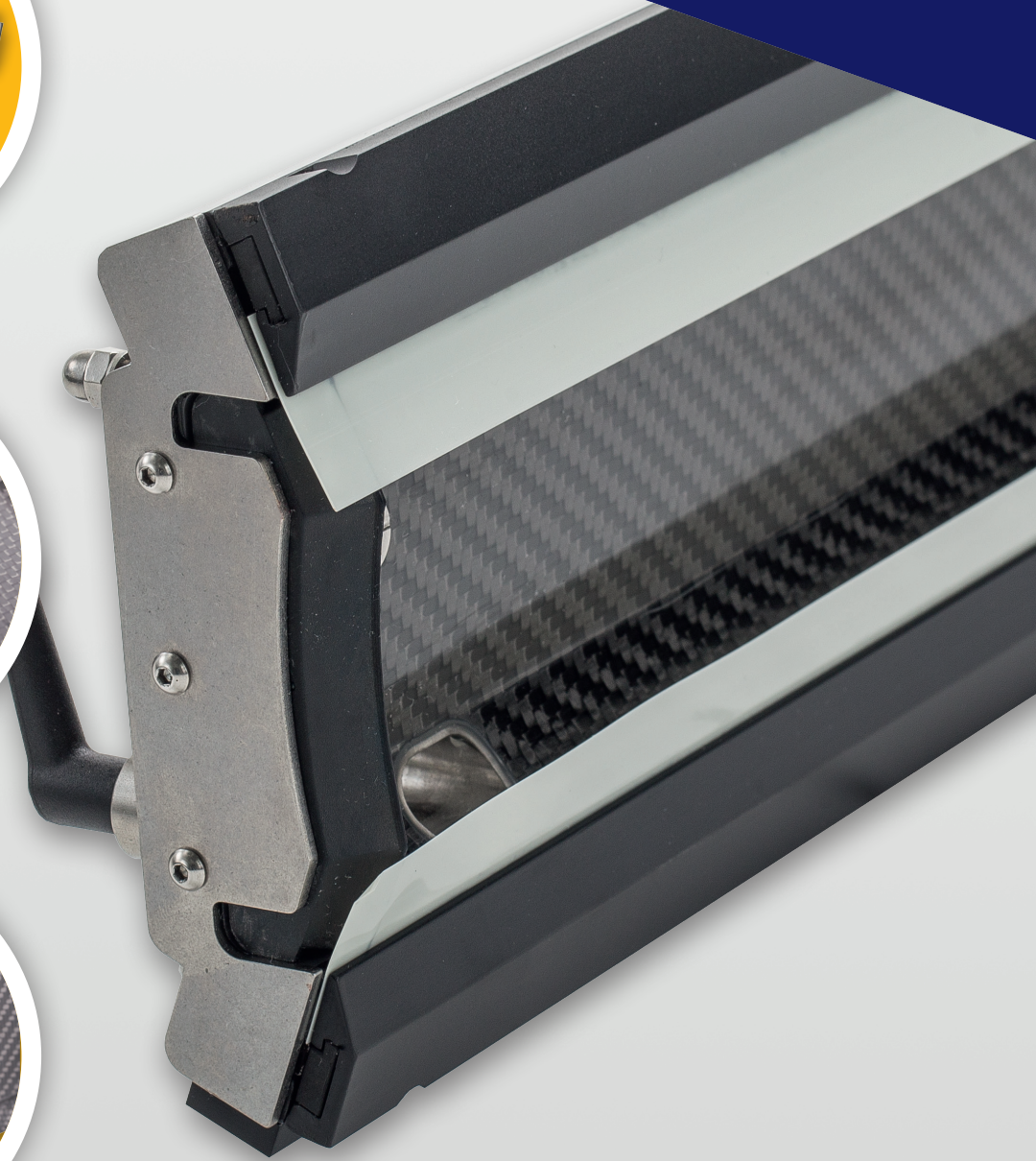
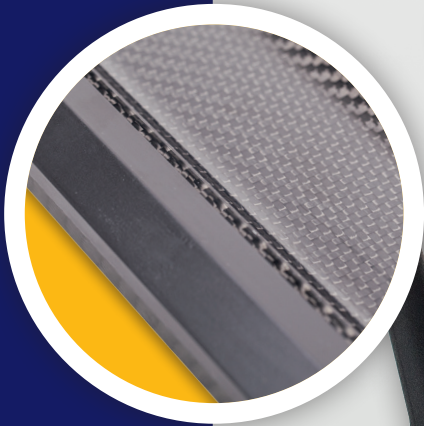




TRESU CFC

*Lightweight carbon fiber
chamber doctor blade system*



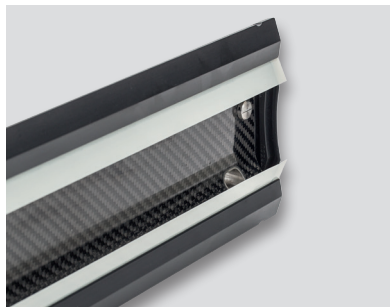
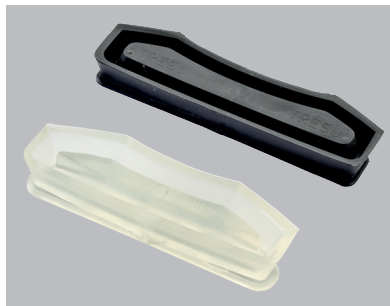
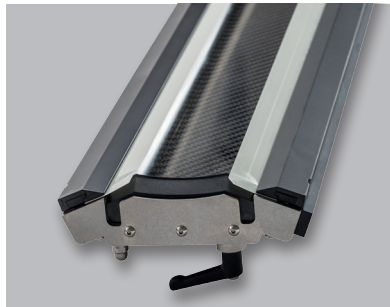


TRESU CFC

Carbon fiber chamber doctor blade system

The lightweight carbon fiber chamber doctor blade system offers corrosion resistance, controlled flow and easy handling.

- The carbon fibre composition ensures high-strength chamber qualities
- The design enables ink and coating circulation in relatively low volumes
- The ink-repellent surface offers extra protection against ink and detergents with high and low pH-values
- Curved inner surfaces minimize volume, control discharge, and enable perfect cleaning
- Pressure-control ink and coating circulation
- The chamber prevents solvents from escaping and protects the ink from degradation
- For all printing and coating units
- Easy handling
- Different construction principles as UniPrint B or UniPrint C. Depending on space condition and/or applications



The TRESU P-Line clamping systems enable changeovers of the stainless steel or plastic doctor blades in less than two minutes

Patented TRESU seals ensure perfect sealing

Resistant to acidic, alkaline inks, and cleaning liquids

Technical Specifications

Profile	D5/P-Line
Weight	From 2,4 kg/m
Anilox Ø	180 - 400 mm
Anilox width	Up to 6000 mm
Construction	Uni-, and MaxiPrint chamber systems
Print mode	Flow- and pressure mode for water-, UV- or solvent based inks
Application	All printing and coating machines



The Best Part of Innovation

A-23-GB-05.16

TRESU Group

14-16, Eegsvej
DK-6091 Bjert
Tel: +45 76 32 35 00
tresu@tresu.com
www.tresu.com